



170002280708



(2017)国认监认字(134)号



中国认可  
国际互认  
检测  
TESTING  
CNAS L0454

# Special Equipment Type Test Report

Report No. WT NET 20-143

Name of product: Lift guide rail  
Model of product: T127-1/B  
Applicant: Tianjin Sunrise Elevator Parts Co., Ltd.  
Manufacturer: Tianjin Sunrise Elevator Parts Co., Ltd.  
Type of inspection: Commission test



National Elevator Inspection and Testing Center

# NOTICE

1. National Elevator Inspection and Testing Center, whose abbreviation and symbol is NETEC, issue the report based on the inspection, test, review or testimony of the inspection and test conducted by NETEC.
2. Commission test sample is designated or delivered, NETEC is only responsible for the test items and conclusion of the sample and the applicant is responsible for the authenticity of sample and relevant technical documents.
3. For the test of the sample in use, it is affected by wear and tear, building deformation, maintenance and other factors, the test results and conclusion in the report issued by NETEC only indicate the status of the sample at the time of test, it does not represent the status when the sample delivered out of the factory, installed or supervisory inspection.
4. NETEC conducts commission test according to the test basis and test items appointed by applicant. The test conclusions only indicate whether the sample meets the requirements of the test basis, and does not represent the complete test and judgment of whether the sample fully meets the national, occupation or enterprise standards.
5. The test report is invalid without stamping the *Test Report Specialized Stamp* or issue date.
6. Test report is invalid without signatures of chief test, verification and approval.
7. Test report is invalid if altered and any partial copy is also invalid.
8. The report is valid only for the applicant. When the relevant parties come up controversy, this report shall not be used as product quality inspection or arbitration report.
9. Different opinions about test report should be reported to NETEC within 15 workdays from the date of receiving the test report, the overdue request will not be processed.
10. It should be subject to the Chinese version, while the English version is for reference only.
11. The standards/methods of test basis No.2 is not approved by CNCA and CNAS.


Add.: 61 Jinguang Avenue, Langfang City, 065000 Hebei, P. R. China


Tel.: 0316-2311414, 2311411, 2311412

Fax: 0316-2057334

Email: [netec@chinaelevators.org](mailto:netec@chinaelevators.org)

Web site: [www.chinaelevators.org/center](http://www.chinaelevators.org/center)

Name of product		Lift guide rail	Serial No. of sample	/
Model of product		T127-1/B	Production date	/
Applicant	Name	Tianjin Sunrise Elevator Parts Co., Ltd.		
	Address	North of Beihua Road, Beihuan industrial park, Jinghai, Tianjin		
Manufacturer	Name	Tianjin Sunrise Elevator Parts Co., Ltd.		
	Address	North of Beihua Road, Beihuan industrial park, Jinghai, Tianjin		
Receiving date	/	Sample No.	/	
Test date	2020-05-22			
Test place	Tianjin Sunrise Elevator Parts Co., Ltd.			
Test condition	Ambient temperature: 23.8°C, relative humidity: 47%			
Test basis	GB/T 22562 –2008/ISO 7465:2007 Guide rails for lifts –T-type Applicant design drawing: SRSG 07B057			
Test conclusion	<p>The test results of the lift guide rail comply with the requirements of the test basis.</p> <div style="text-align: right;">  <p>Issue date: 2020-05-15</p> </div>			

Reported by: 

Verified by: 

Issued by: 

检验报告专用章

**1. Main technical parameter and configuration of the sample**

Material	Q235B
Applicable environment	Indoor
Manufacturing process	Machined
Blade width	$16^{+0.1}_0$ mm
Guide rail height	$89 \pm 0.75$ mm
Blade height	$35^{+3}_0$ mm
Guide rail width	$127 \pm 1.5$ mm
Holes diameter	17mm
Guide height at the level of the machined surface for the location of the fishplate	$88 \pm 0.1$ mm

**2. Technical document examination**

No.	Examination items	Examination results
1	Checking material	Comply with requirements
2	Checking design standard or design drawing	Comply with requirements





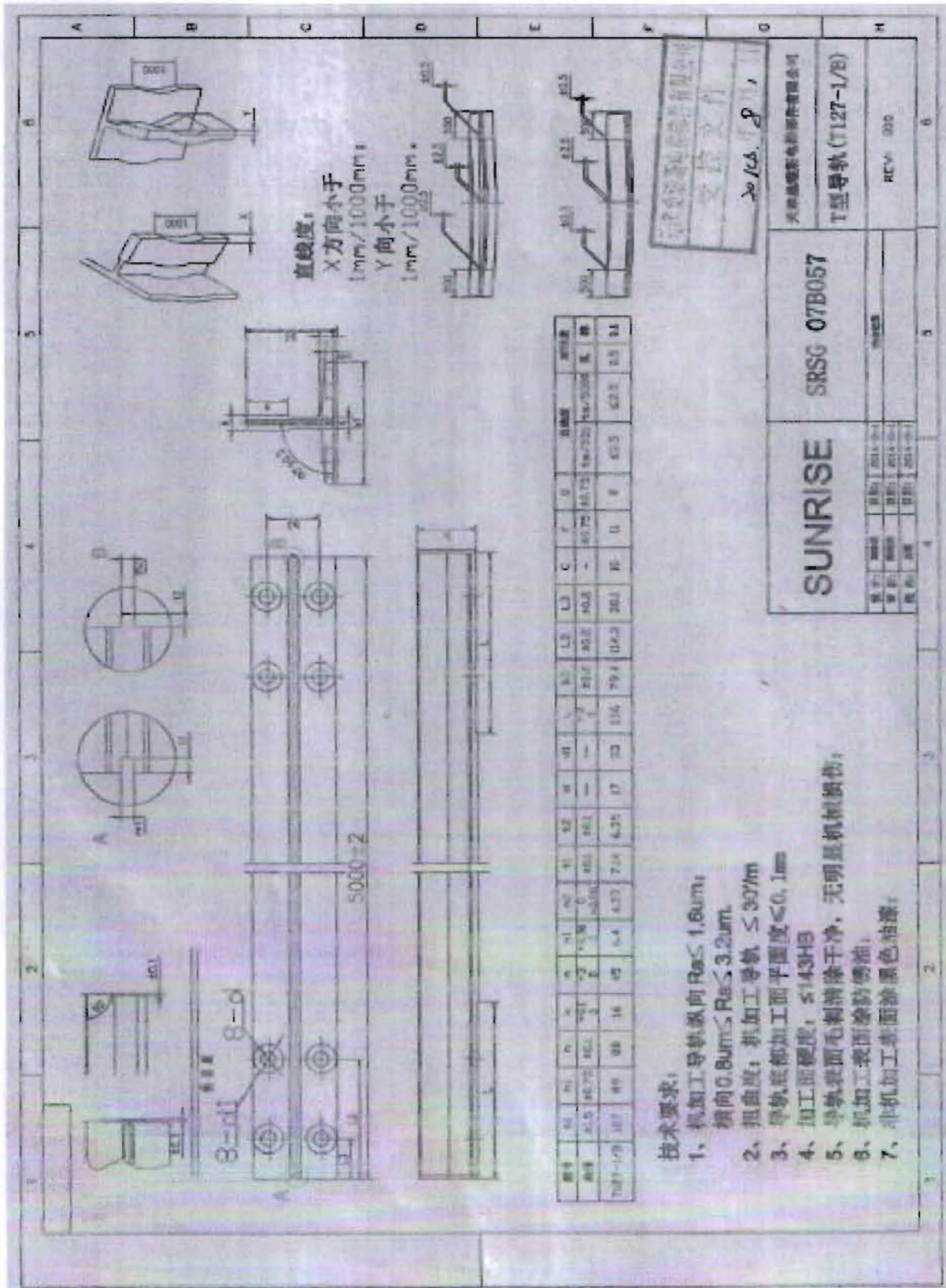
## 3. Test items and test results

No.	Test items		Test results	
1	Guide rail width		127.15mm	
2	Guide rail length		4999mm	
3	Blade width		16.03mm	
4	Guide height at the level of the machined surface for the location of the fishplate		88.02mm	
5	Machined surface length		158mm	
6	Dimensions of key and keyway	Width of the key	6.36mm	
		Length of the key	6.36mm	
		Width of the keyway	6.44mm	
		Depth of the keyway	7.18mm	
7	Dimensions of holes	Distance between the axes of the holes	79.31mm	
		Distance between the axis of the farthest holes from the end of the guide rail and this end	114.38mm	
		Distance between the axis of the nearest holes to the end of the guide rail and this end	38.22mm	
8	Guide rail blade roughness	Side blade	Longitudinal	Ra1.01um
			Transverse	Ra1.58um
	Top blade	Longitudinal	Ra0.93um	
		Transverse	Ra2.70um	
9	Roughness of foot rear surface		Ra1.02um	
10	Blade shape		Comply with requirements	
11	Machined edge		Comply with requirements	
12	Holes in guide rails		Comply with requirements	
13	Marking for /BE class		/	



No.	Test items		Test results
14	Blade and surface for fishplate flatness at the guide rail ends	Side blade	0.06mm
		Top blade	0.05mm
		Surface for fishplate	0.08mm
15	Blade position and symmetry	Position	0.76mm
		Symmetry	0.98mm
16	Blade flatness	Side blade	0.10mm
		Top blade	0.15mm
17	Key and keyway symmetry  A-B	Key	0.06mm
		Keyway	0.04mm
18	Machined surface for fishplate perpendicularity		0.03mm
19	Key and keyway perpendicularity	Key and side blade	0.05mm
		Key and top blade	0.05mm
		Keyway and side blade	0.06mm
		Keyway and top blade	0.05mm
20	Hole axis symmetry		0.10mm
21	Width of the connecting part of the foot to the blade symmetry		0.35mm
22	Foot symmetry		0.70mm
23	Side and top blade perpendicularity		0.05mm
24	Protection for special environment		/

4. Applicant design drawing





5. Sample photo

